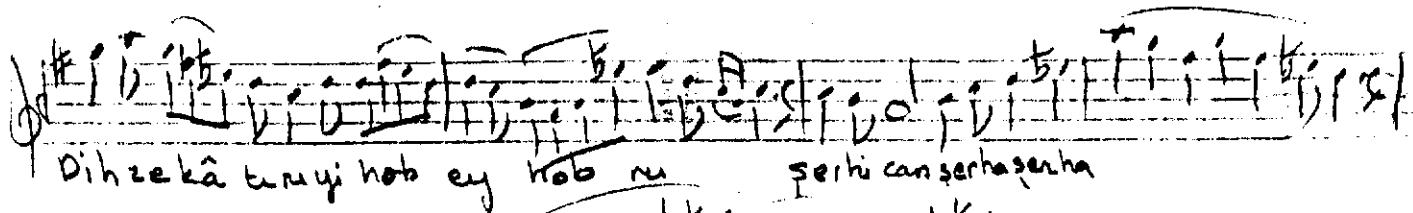
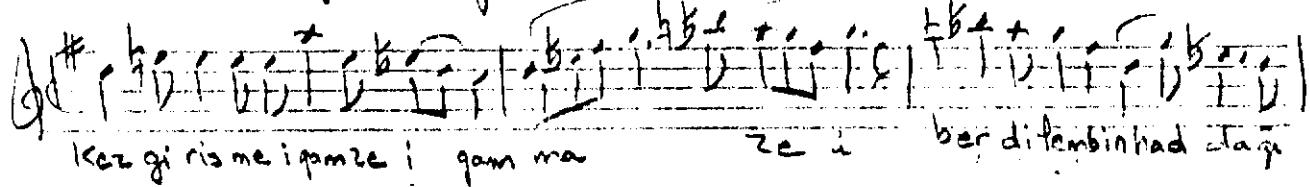


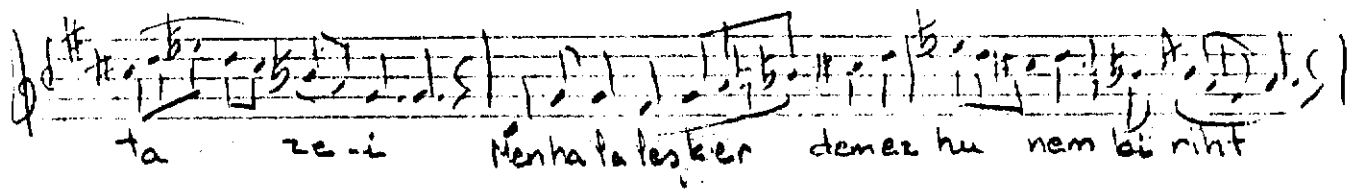
bertere bi behariki hazan sebz ta rest.



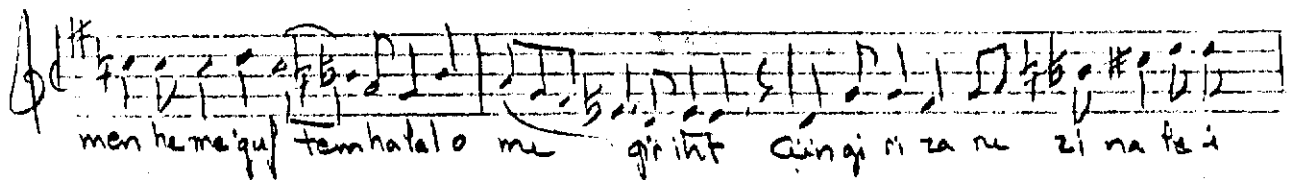
Dih ze kâ tûrûyi hob ey hob nu şerhi can şerhasen ha



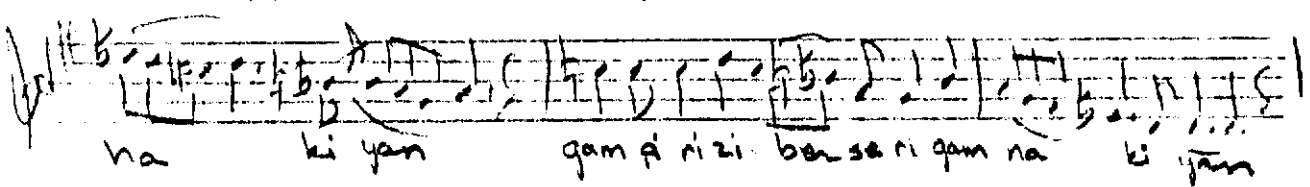
kez gi ri se me i pân ze i gam na ze i ber di tembin had ta gi



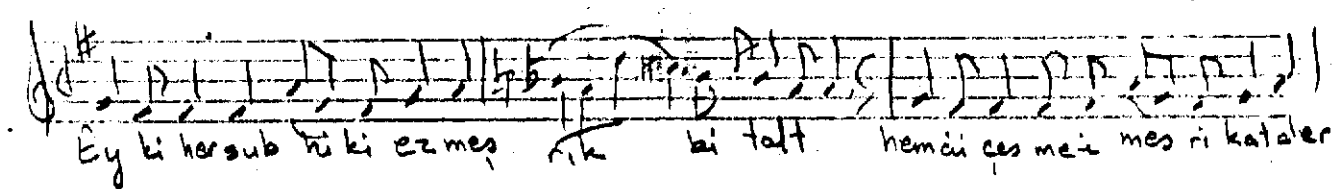
ta ze-i Menhatala tesker demez hu nem bi riht



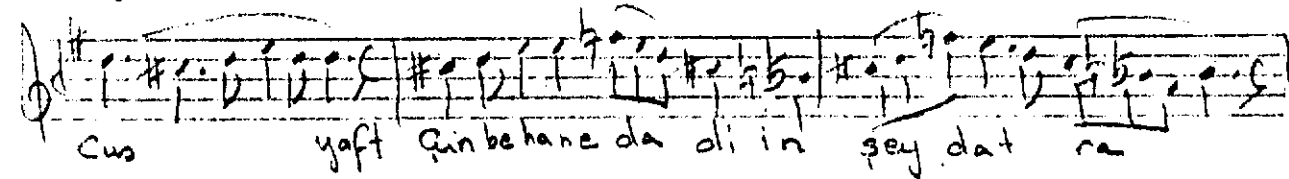
men ha me' quf temhatalo me qirihî Gûngi ri za nu zi na ta i



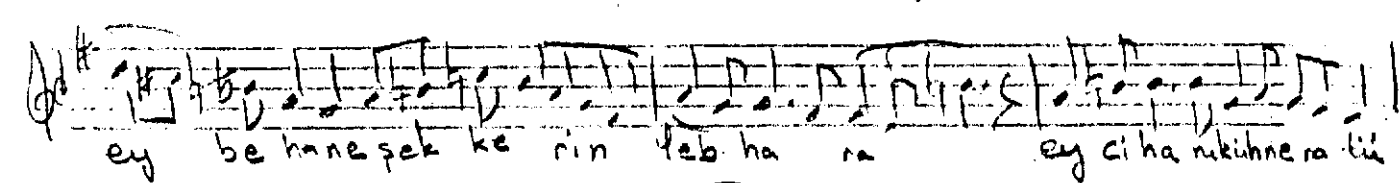
na ki yân gam pi ri zi ber se ri gam na ki yân



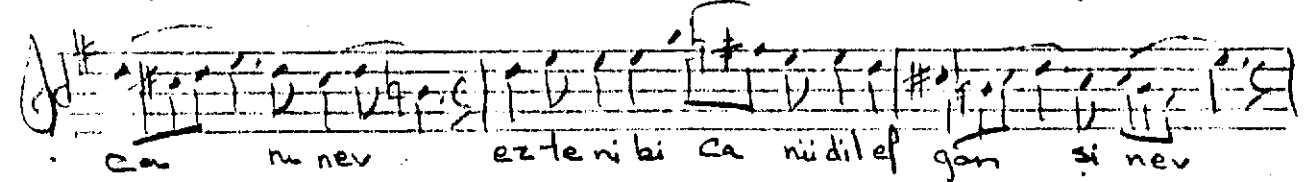
Ey ki her sub hû ki ez mes rik bi talt hemci çes meiz mes ri kataler



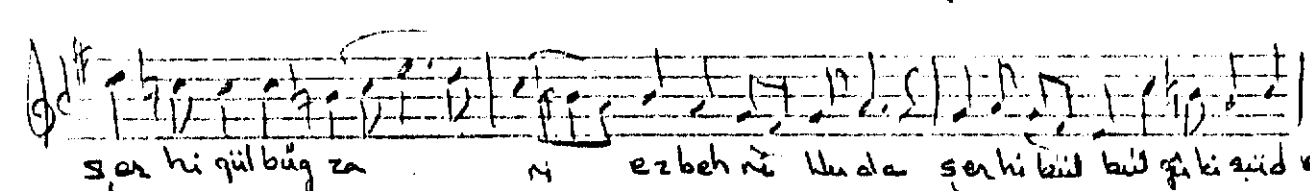
Cus yaft Qınbehane da di in şey dat ra



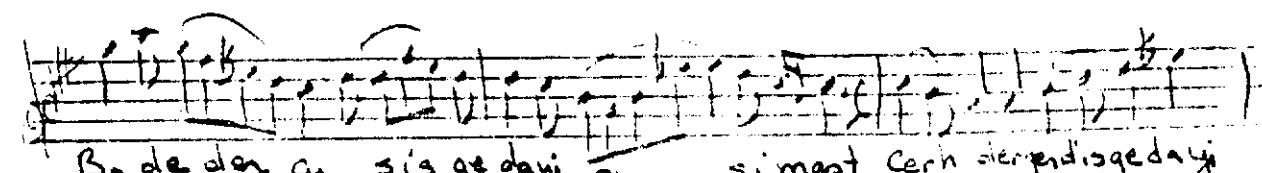
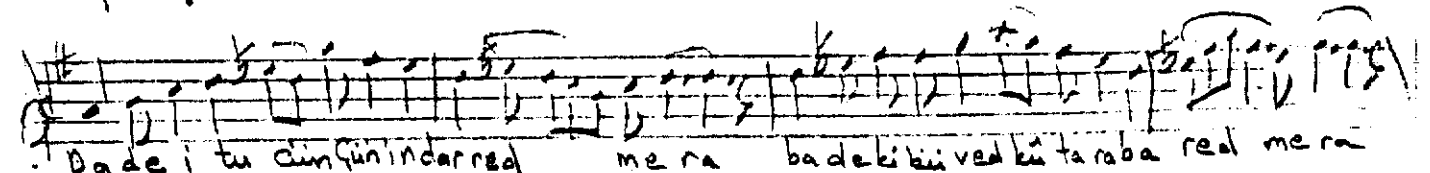
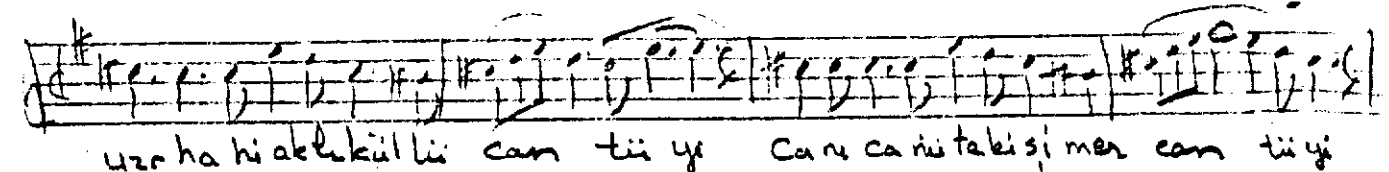
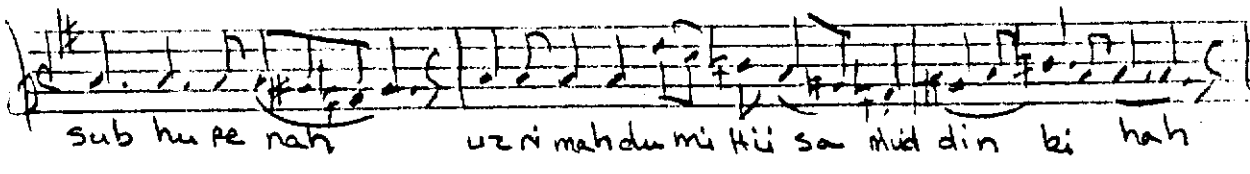
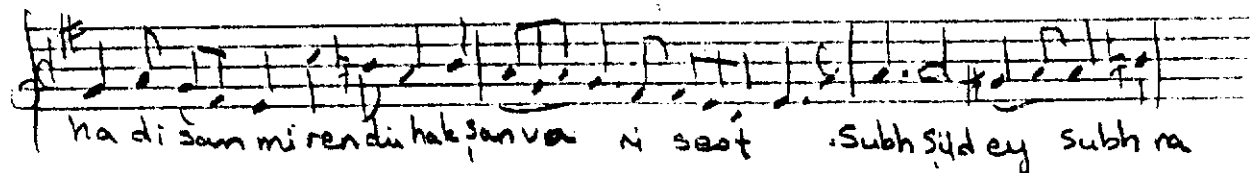
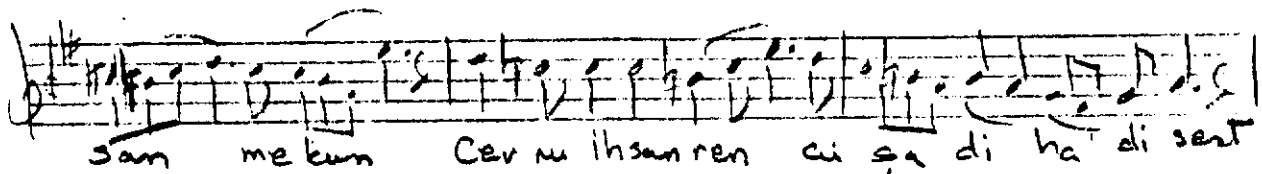
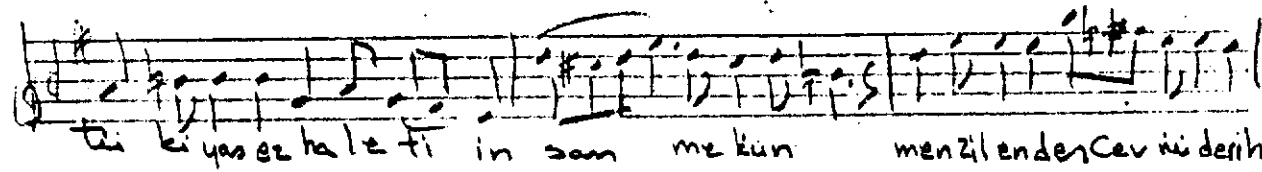
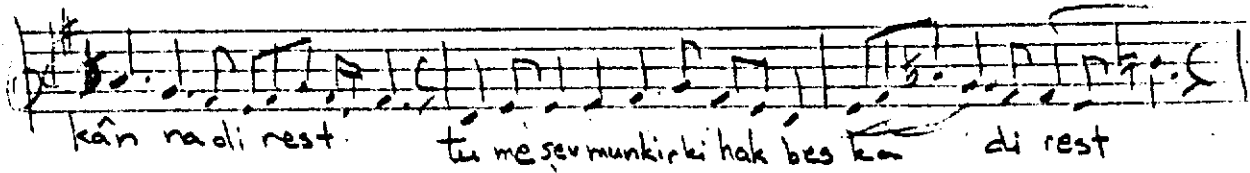
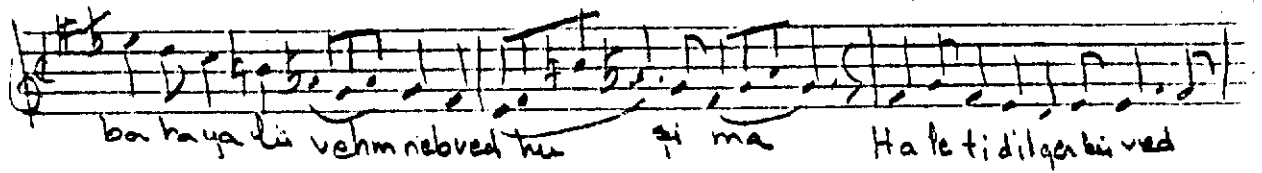
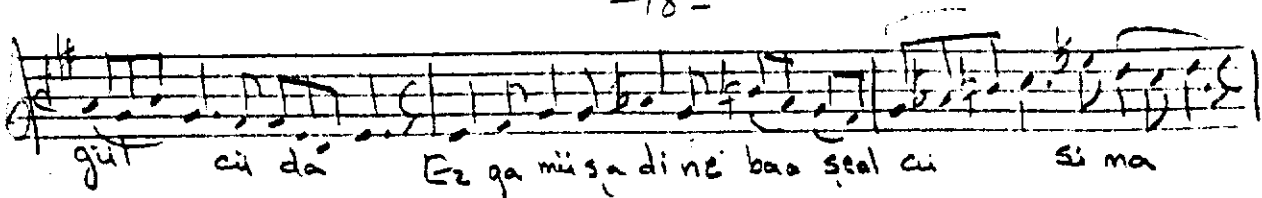
ey be hane şek ke rin teb ha ra ey ci ha nekunne ra tû

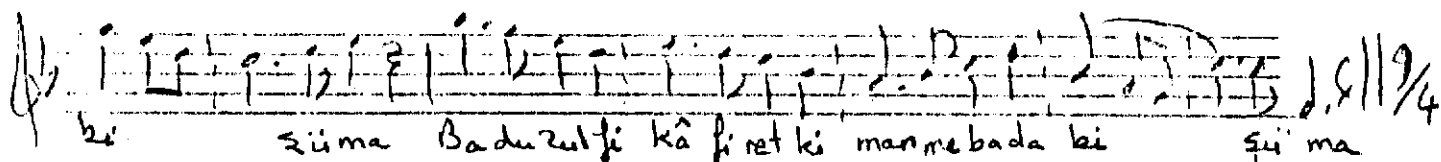
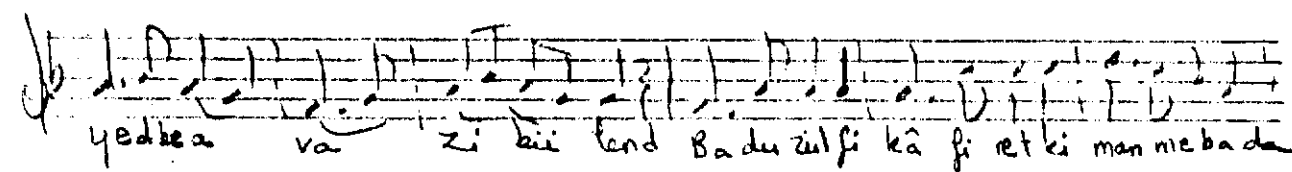
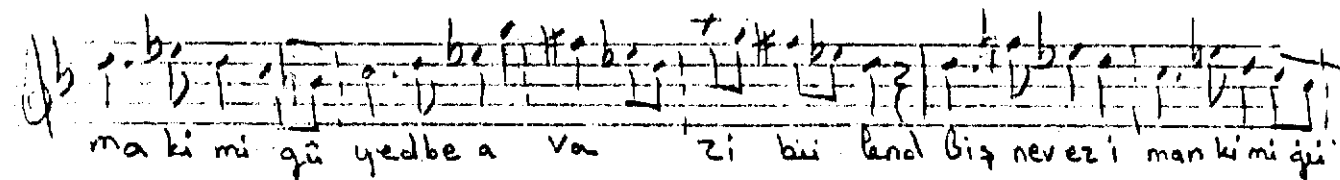
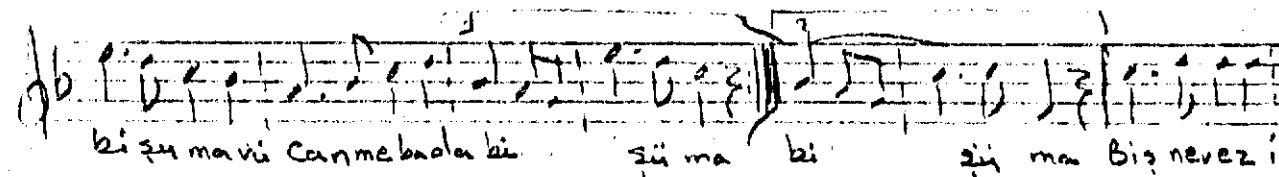
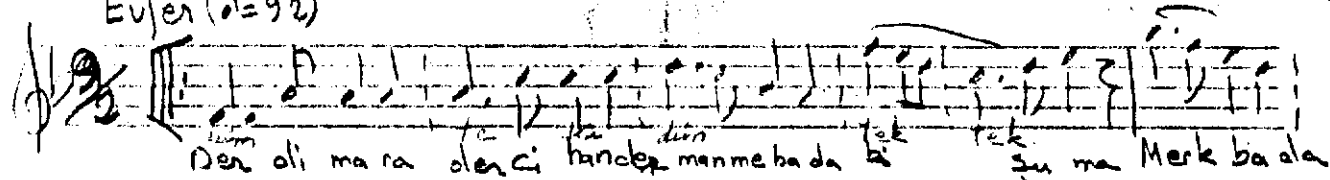
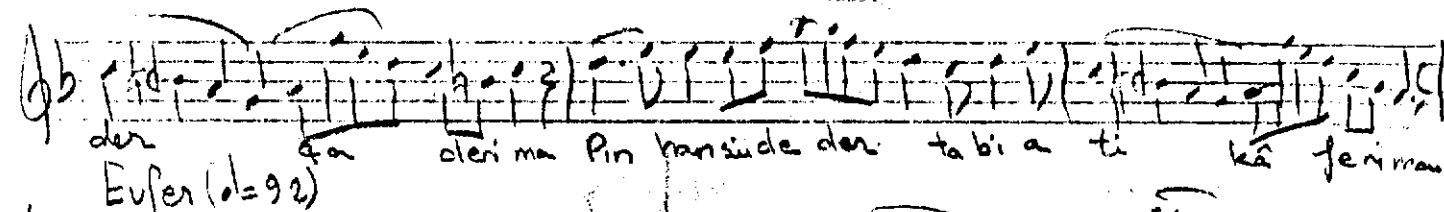
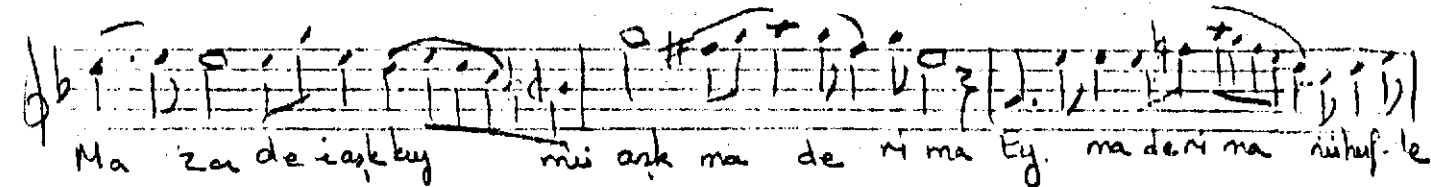
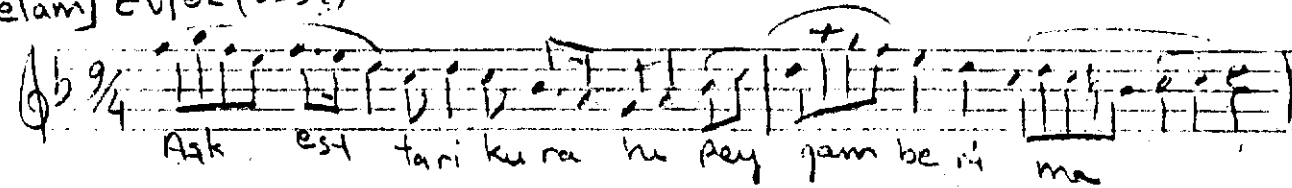
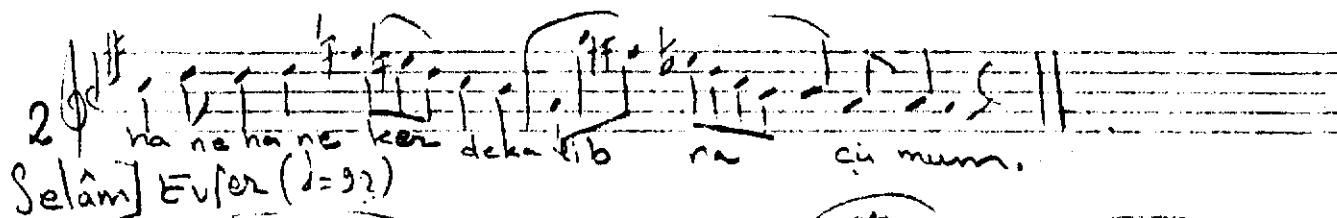
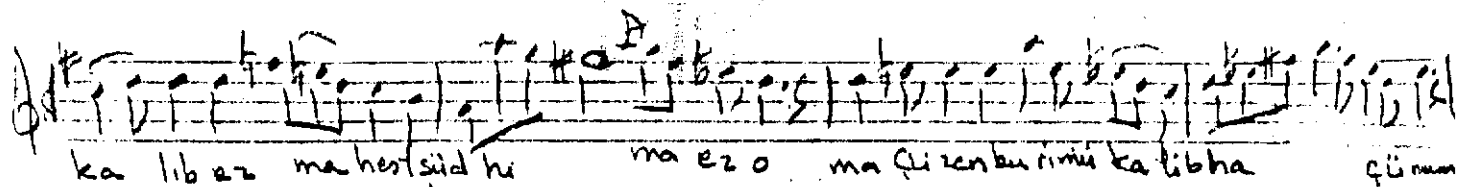
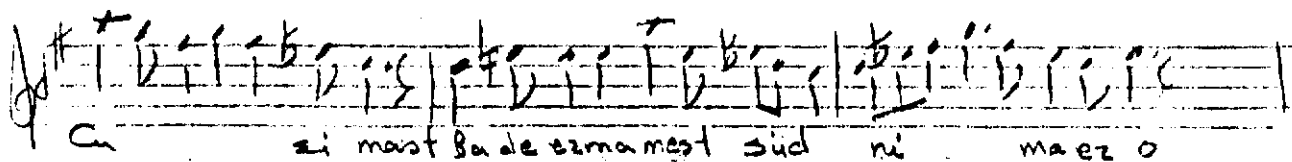


ca nu nev ez teni bi ca nûdilef gam si nev



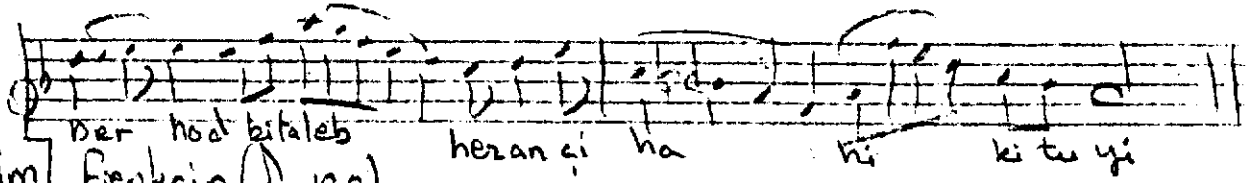
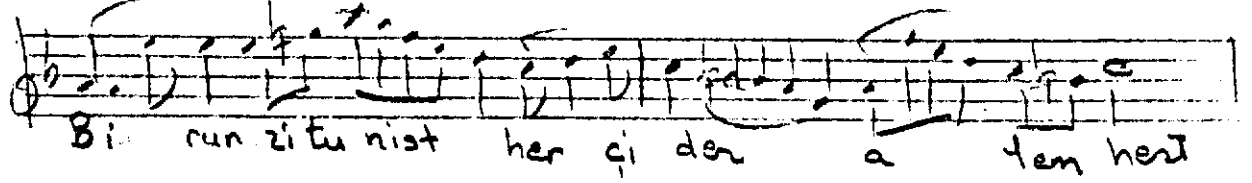
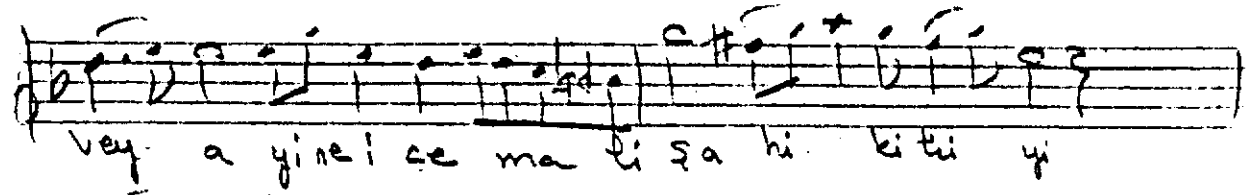
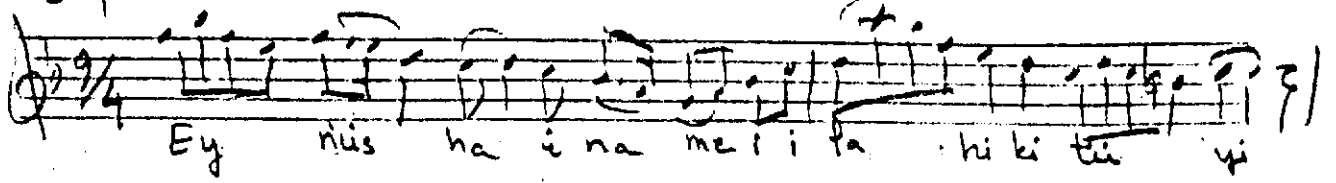
şer hi gül büğ za ri ezbeh nû lû da şer hi kûl kûl gû ki zûd ez



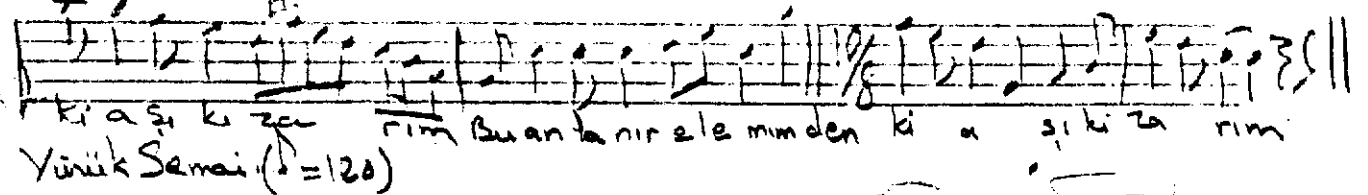
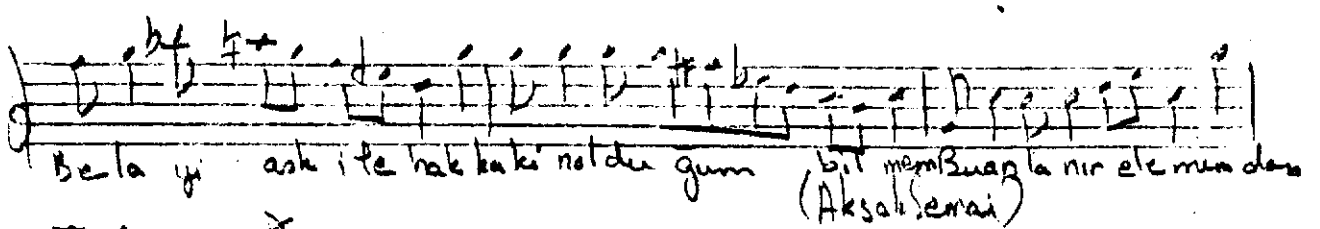
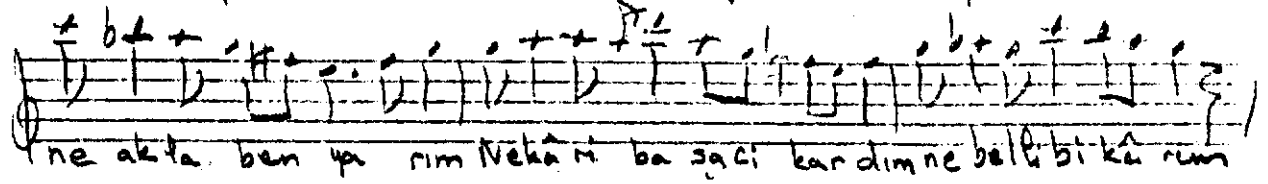
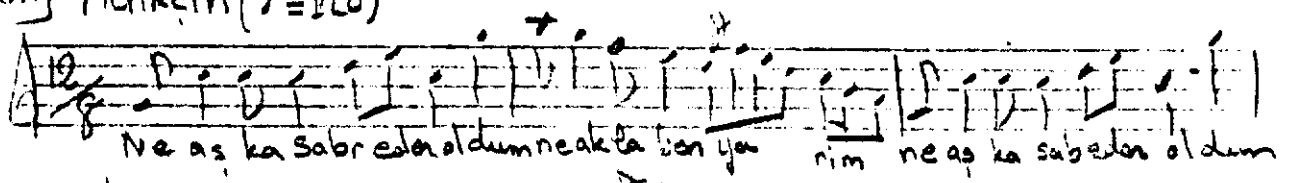


Euphor. (♩=92)

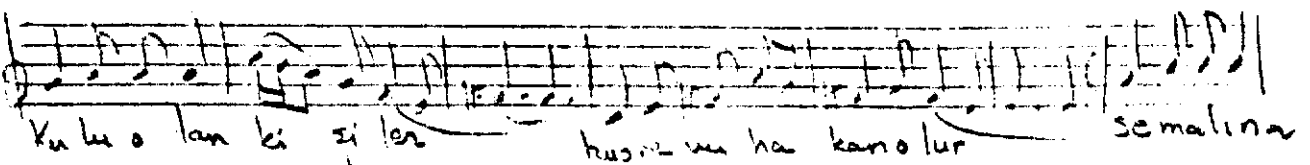
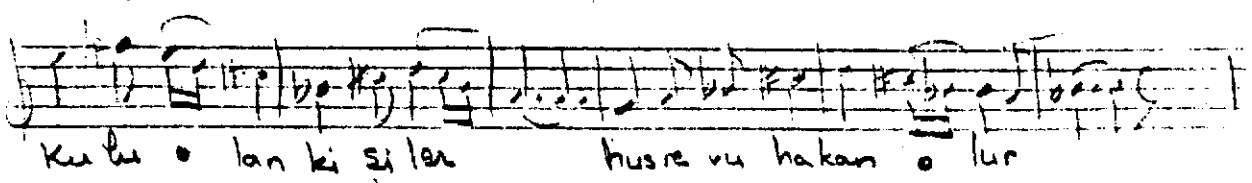
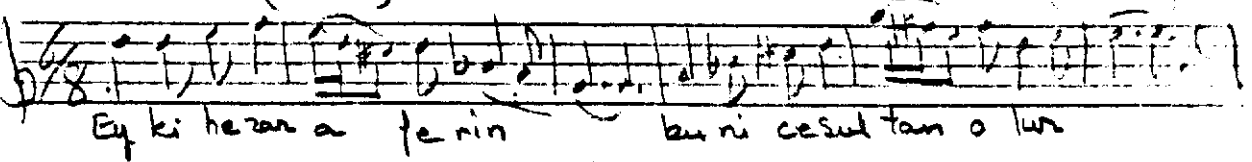
-20-

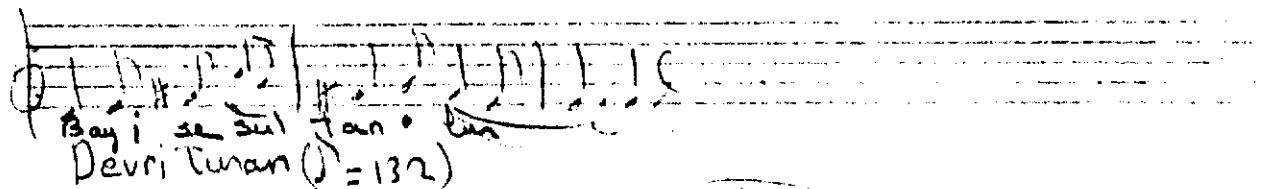
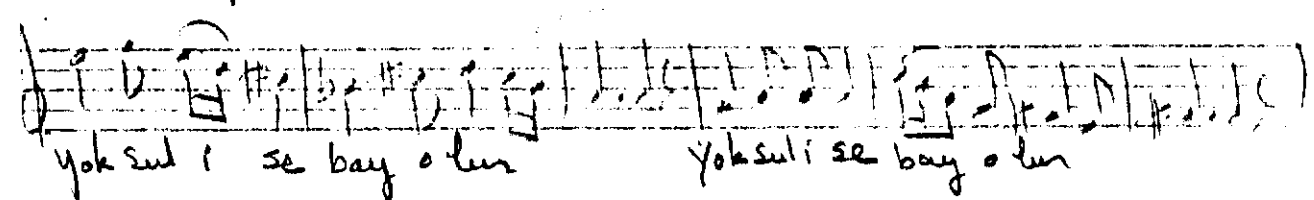
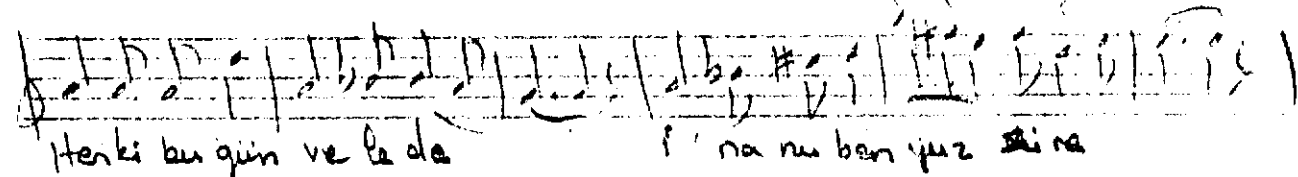
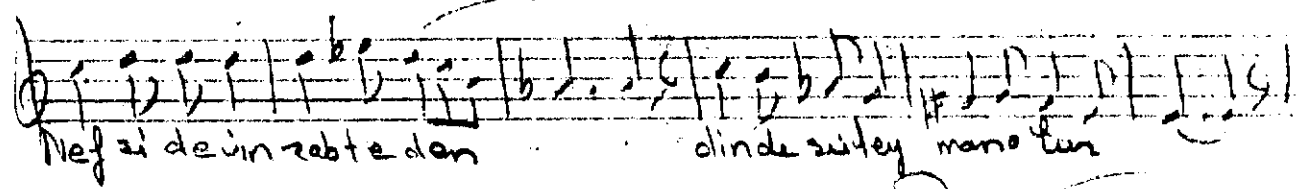
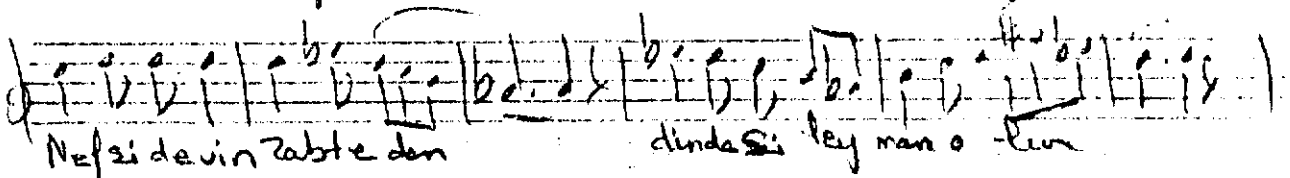
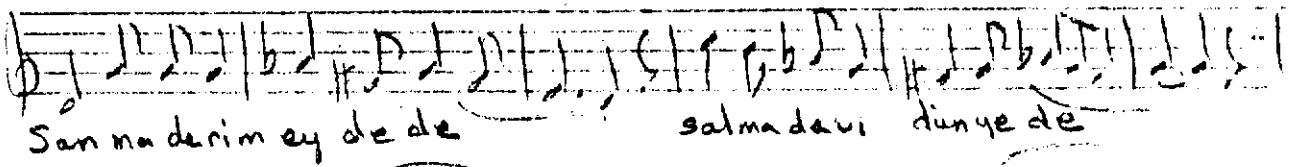
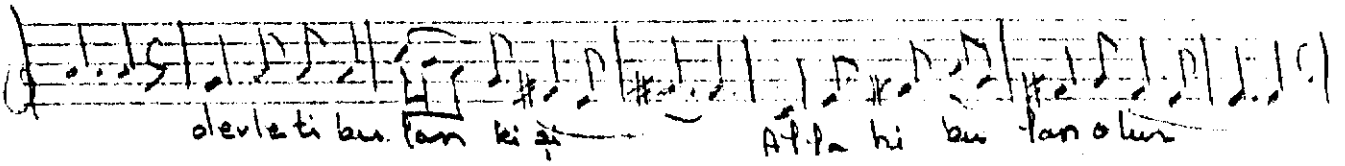
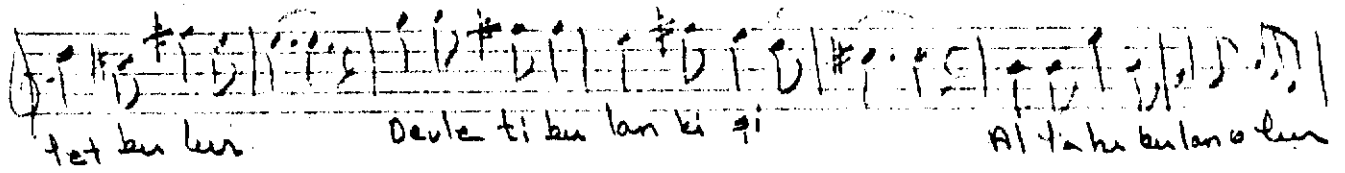
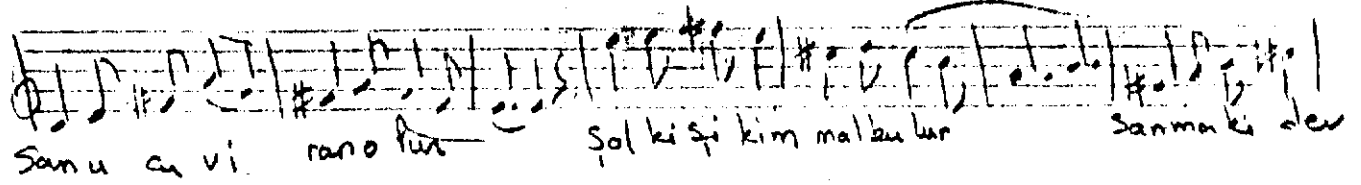
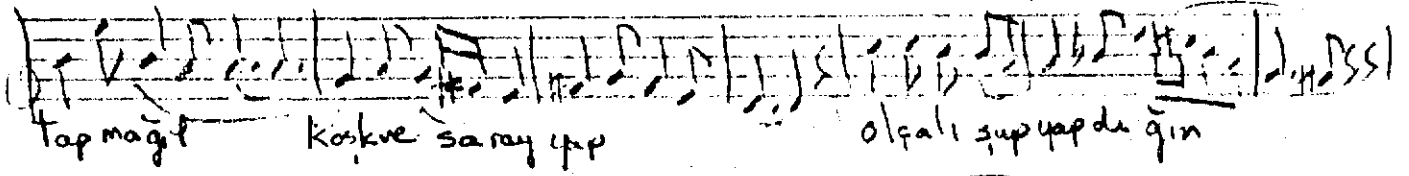


[3. Selâm] Fienkcin (♩=120)

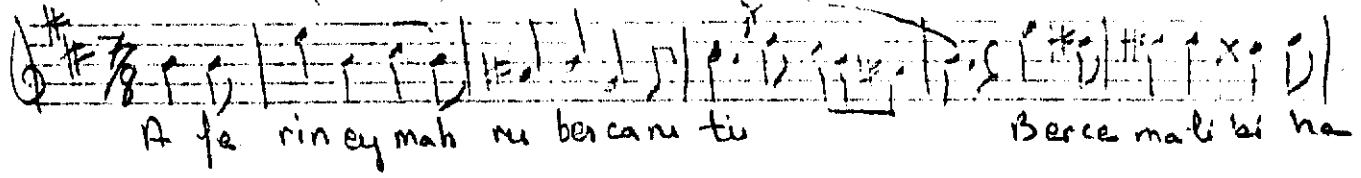


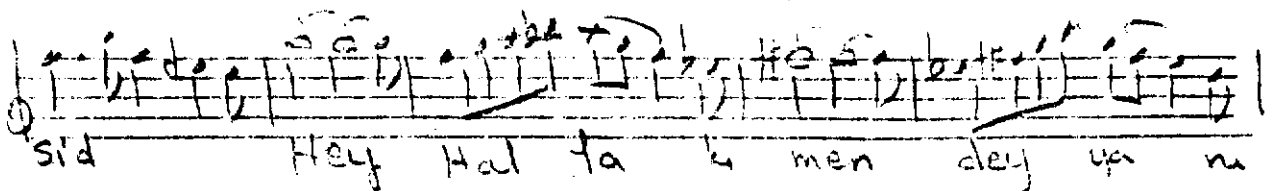
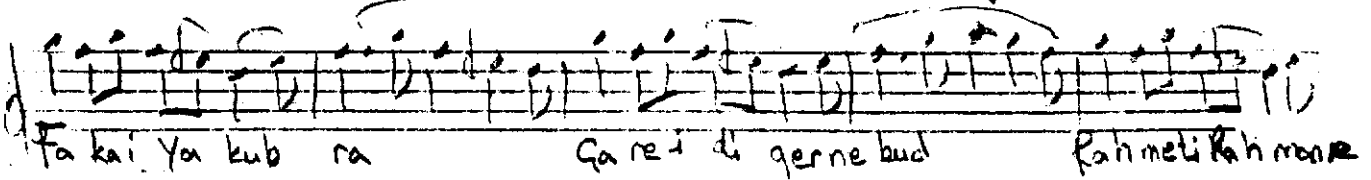
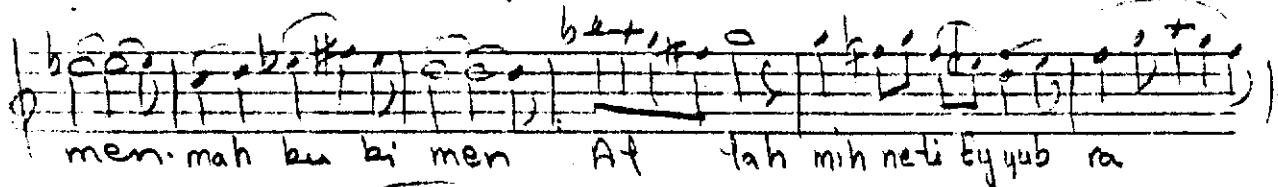
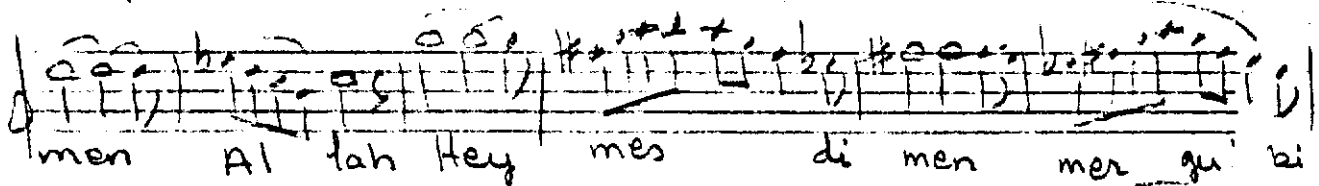
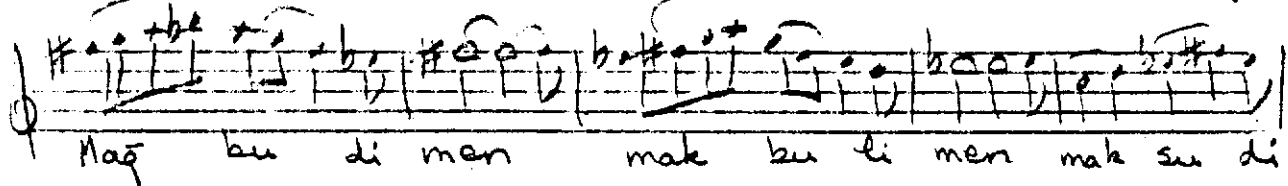
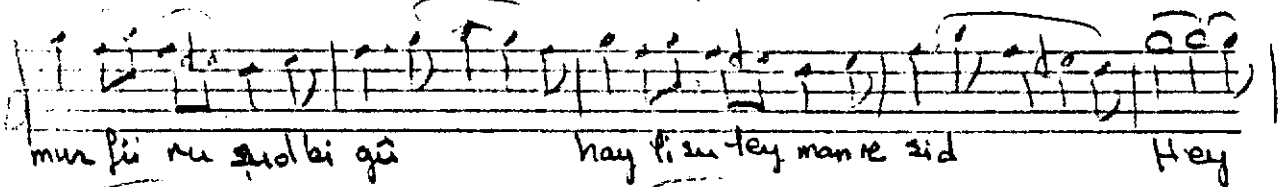
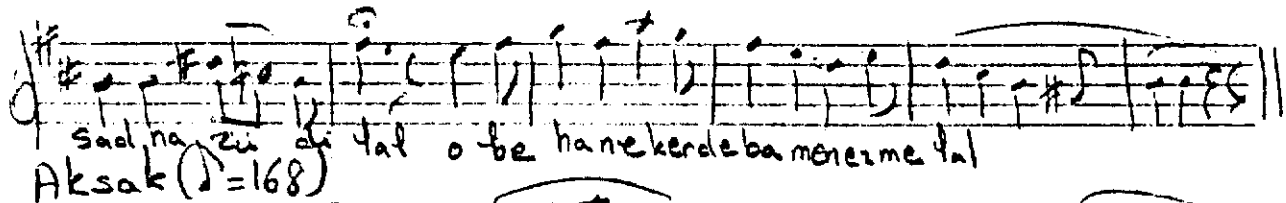
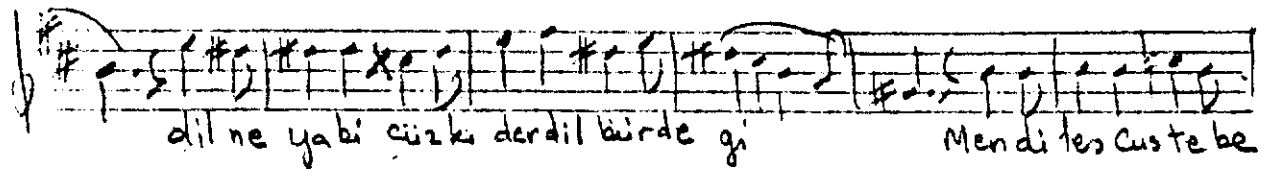
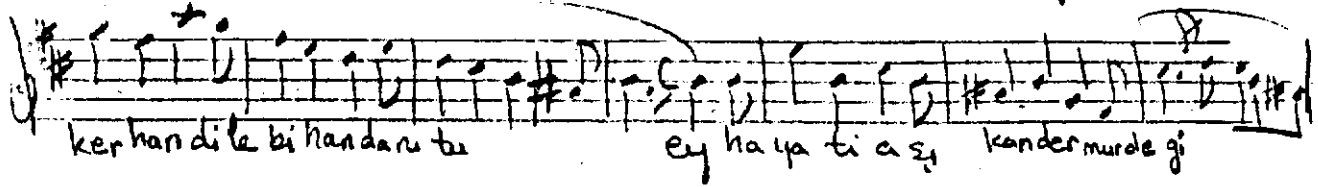
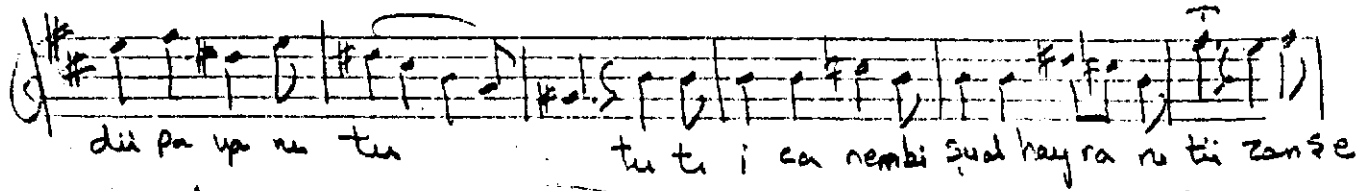
3.

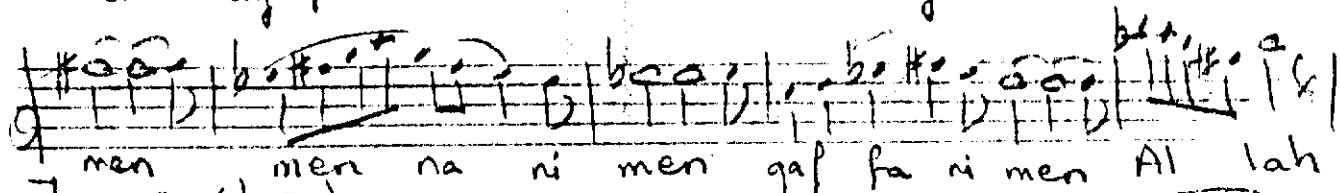
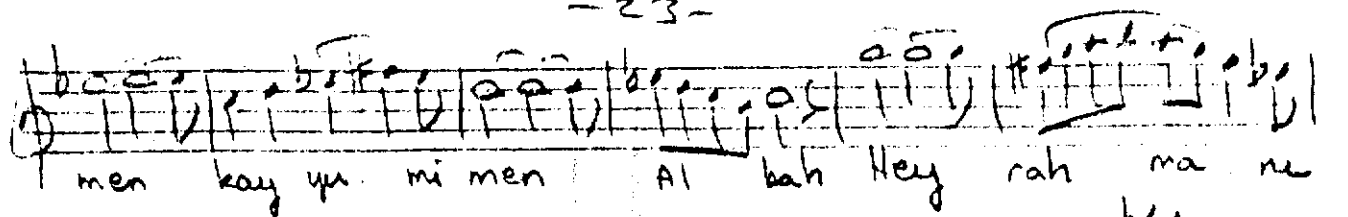




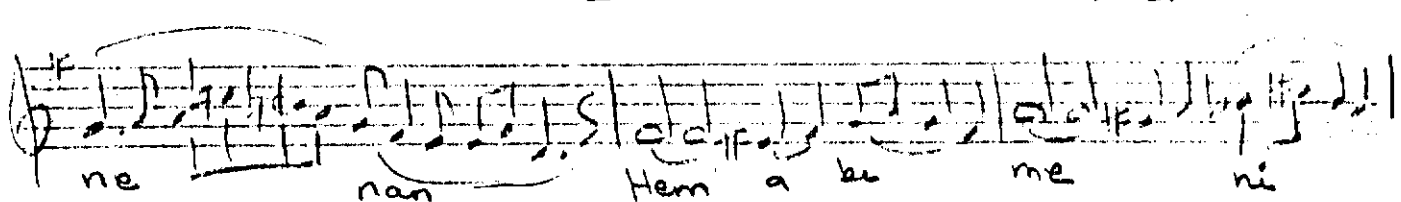
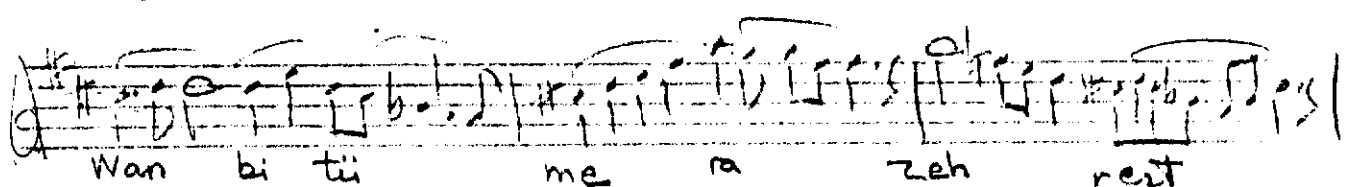
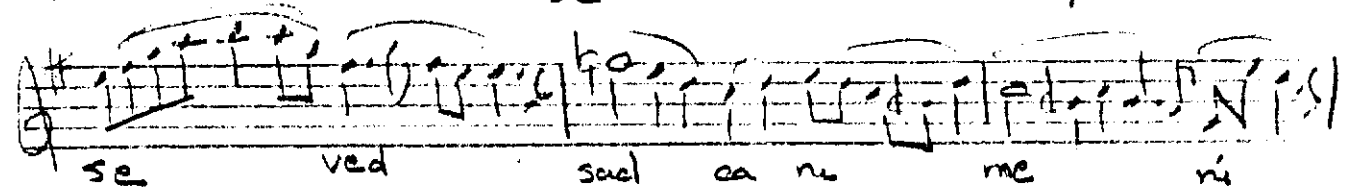
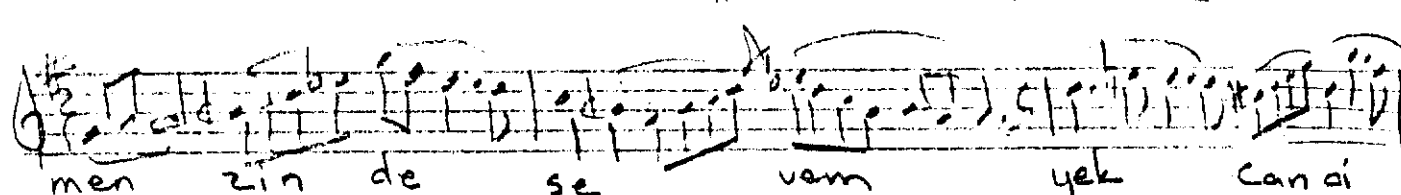
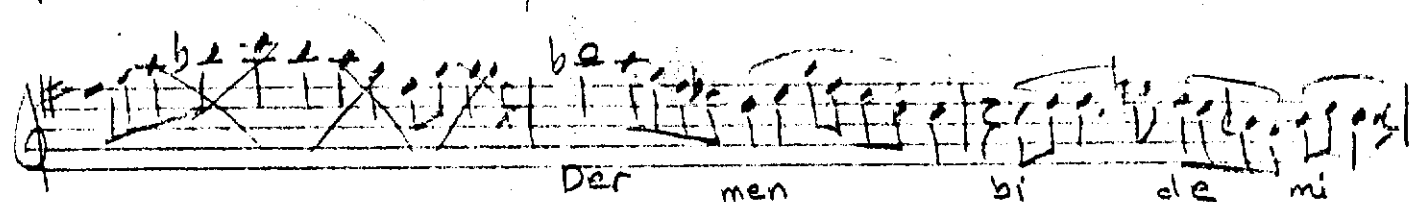
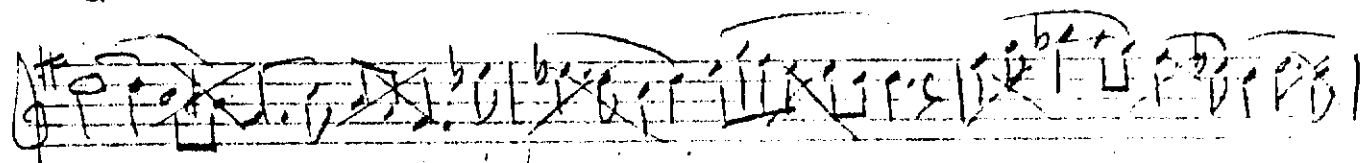
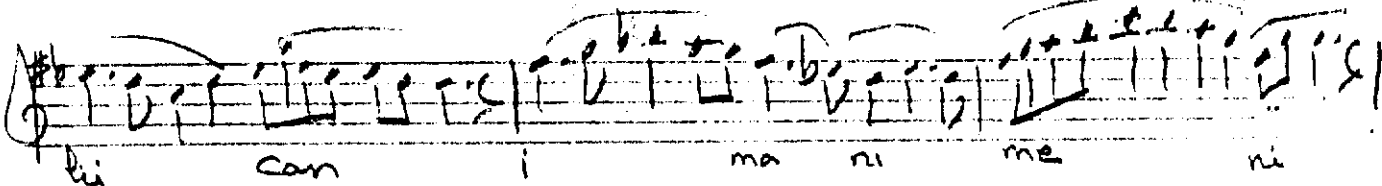
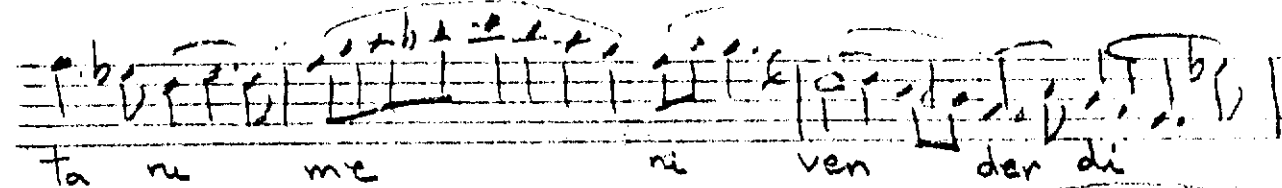
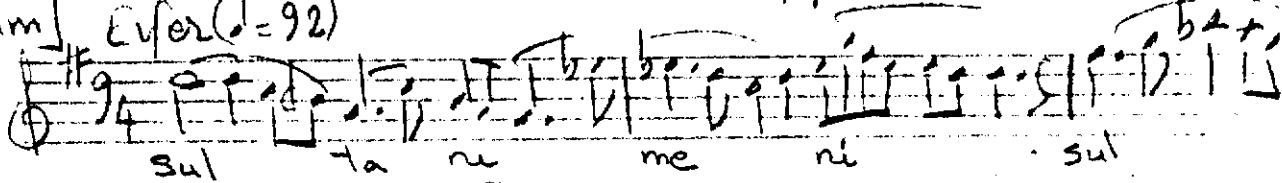
36







4. Selâm] Efer (♩ = 92)





Handwritten musical score on four staves. The music is written in treble clef with a key signature of one sharp (F#) and a common time signature (C). The lyrics are in German. The first staff ends with a double bar line. The second staff ends with a double bar line. The third staff ends with a double bar line. The fourth staff ends with a double bar line.

hem na nu me ni zehr ez ti  
me ra pa zehr se ved  
kan di se ke ri er za nu  
me ni